



860 DSPi Trace Route

Trace Route in the 860 DSPi

Trace Route is a network utility which plots a route from source to destination displaying all routers along the way in addition to the round trip time from the source to the router. It also attempts to do a reverse Domain Name look up to display the registered name of each router.

How does my 860 DSPi utilize Trace Route?

The 860 DSPi can perform trace route from source to destination for up to 30 hops. The 860 trace route follows the standard procedure sending a series of ping packets and timing return packets from the routing devices in the path to the destination.

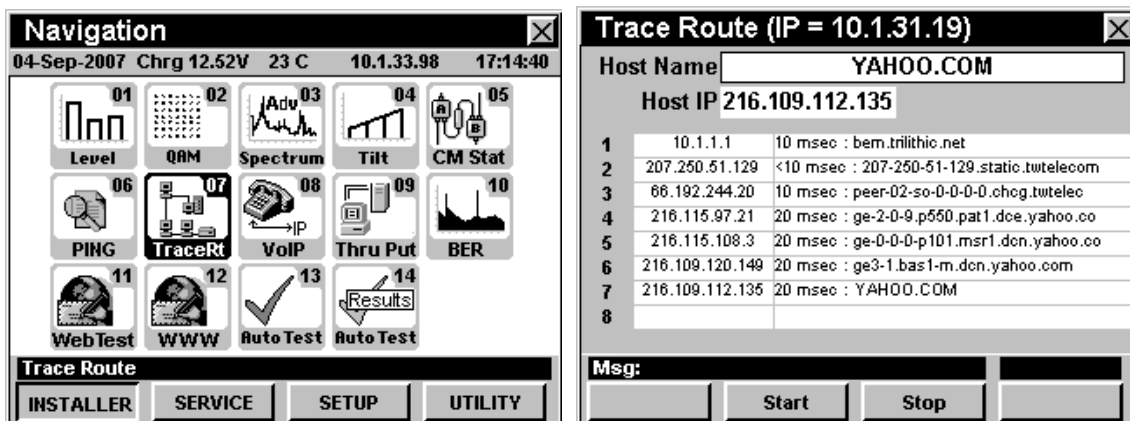
How can I see if my 860 DSPi supports Trace Route?

The easiest method to see if your 860 DSPi supports Trace Route is to go to the Information Menu on the Setup TAB. Examine the version. Note: Firmware must be V8.1.1.1 or higher.

How do I use the Trace Route mode?

The Trace Route mode initially displays the host used in the Ping mode. This allows you to toggle from Ping to Trace Route using the same destination. The reverse is also true. The last IP address or domain name that you perform a Trace Route to is the new default in the ping mode.

Simply enter a new IP address or domain name and press Start to begin. The device will continuously perform a trace route in a loop. This allows the user to see if a particular router is intermittently passing ping packets as well as see if different routes are being taken. Note: There is no guarantee that a ping packet will follow the same route each time it is sent out.



For Additional Help Contact
 Trilithic Applications Engineering
 1-800-344-2412 or 317-895-3600
support@trilithic.com or www.trilithic.com

860 DSPi Trace Route
 P/N 0010275034 – Rev 1/08
 1 of 1