



860 DSPi Work Orders

This application note describes the steps (with screen captures) involved in using an 860 DSPi with the CSG work order system. One possible sequence will be described but countless methods could be chosen by the administrator and the technician. This sequence will be described in a chronological sample of a technician's day.

Required Equipment:

- 860 DSPi with V6.3.1.1 or higher firmware
- Trilithic Workbench V1.5 or higher with TDM Component
- CSG Work Order System with Technet Vx.x.x or higher

Basic Steps:

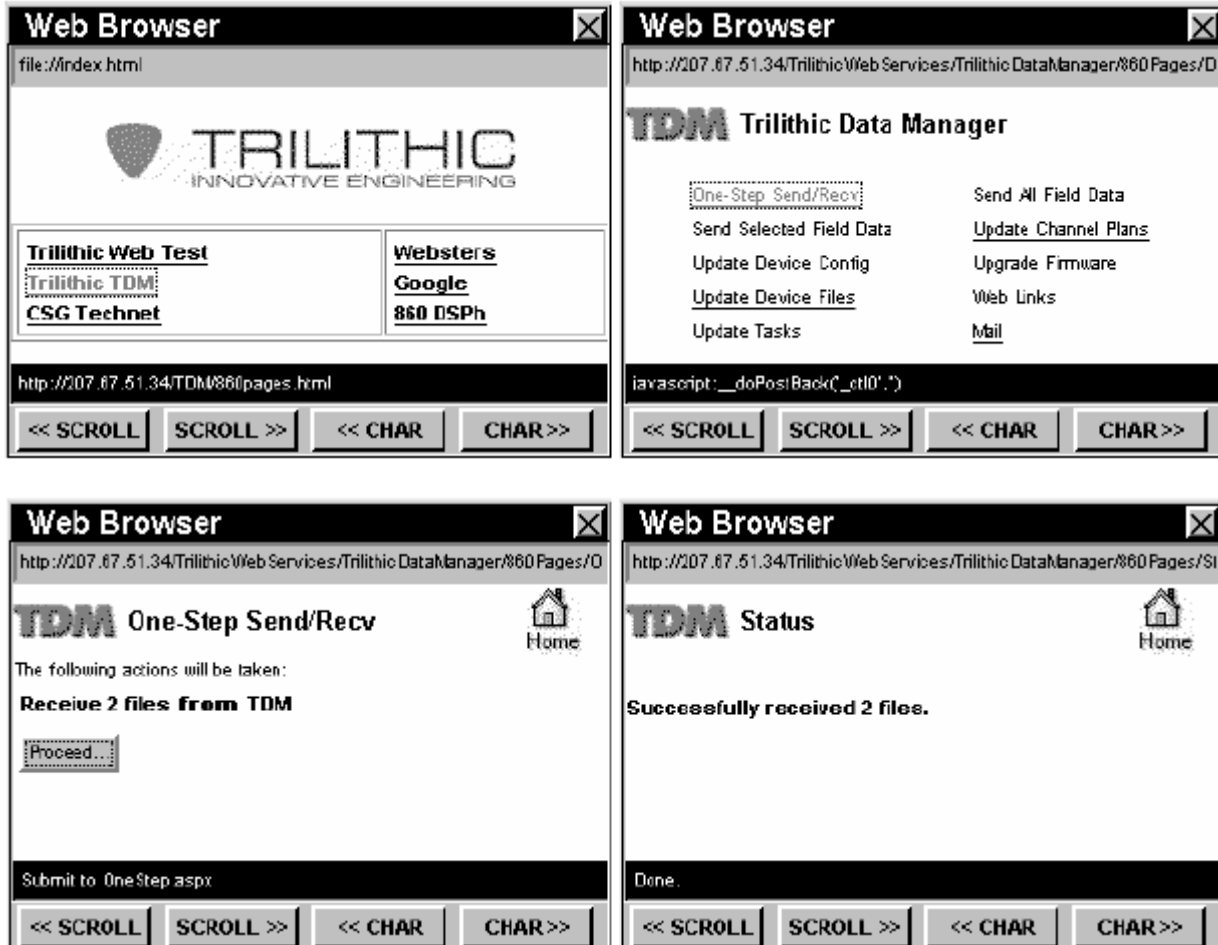
- Administrator logs into Workbench in the morning
 - Prepares technicians outboxes with meter configuration changes
- Tech logs into TDM in the morning to Re-Sync his meter
 - Updates any Channel Plans, Macros, or firmware components
 - Uploads previous days work
- Tech logs into CSG Technet and starts a Work Order
- Tech goes to the job site and takes all of the data logs
- Tech logs into CSG to close the Job and get next job
- Administrator logs into Workbench in the evening
 - Accept technicians days work

For Additional Help Contact
Trilithic Applications Engineering
1-800-344-2412 or 317-895-3600
support@trilithic.com or
www.trilithic.com

860 DSPi Work Orders
P/N 0010275012 – Rev 5/07
1 of 10

8:00 AM

Technician uses his meter to login to TDM via their home. If there is anything to do or update, those items will be underlined and selectable.



The screenshots illustrate the following steps in the TDM interface:

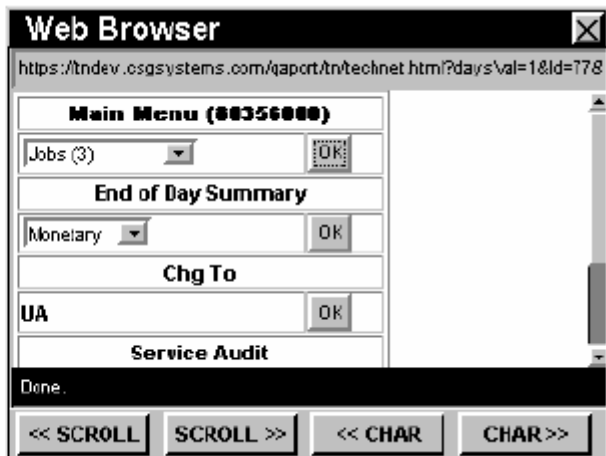
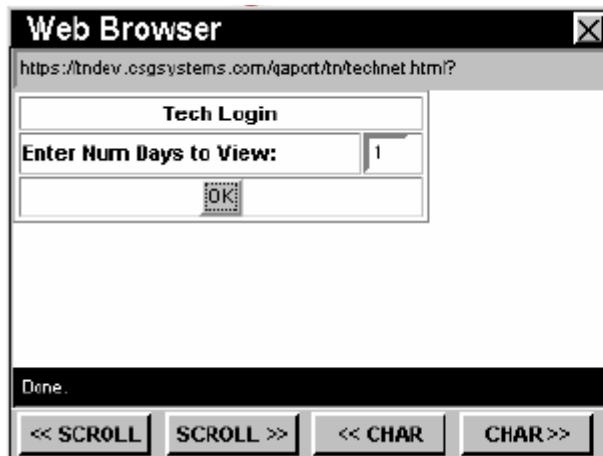
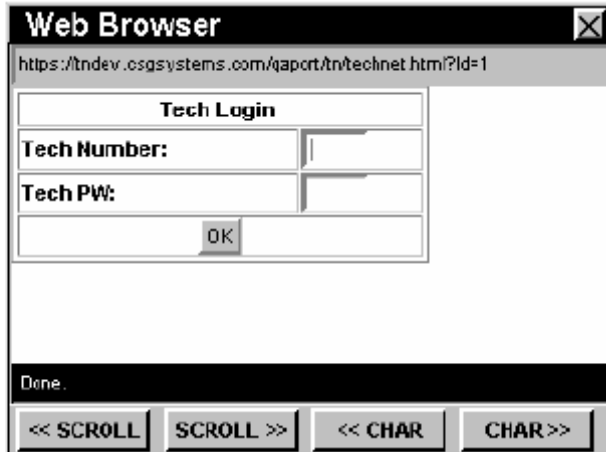
- Home Page:** Displays the Trilithic logo and a menu of links including Trilithic TDM, CSG Technet, Websters, Google, and 860 DSPH.
- One-Step Send/Recv:** Lists actions such as Send Selected Field Data, Update Device Config, Update Device Files, Update Tasks, Send All Field Data, Update Channel Plans, Upgrade Firmware, Web Links, and Mail.
- Status:** Displays the message "Successfully received 2 files." with a "Done." status at the bottom.
- Proceed Screen:** Shows the text "Receive 2 files from TDM" and a "Proceed..." button.

For Additional Help Contact
 Trilithic Applications Engineering
 1-800-344-2412 or 317-895-3600
support@trilithic.com or
www.trilithic.com

860 DSPi Work Orders
 P/N 0010275012 – Rev 5/07
 2 of 10

8:05 AM

Technician uses his meter to login to the CSG Technet system from their home.



For Additional Help Contact
 Trilithic Applications Engineering
 1-800-344-2412 or 317-895-3600
support@trilithic.com or
www.trilithic.com

860 DSPi Work Orders
 P/N 0010275012 – Rev 5/07
 3 of 10

8:10 AM

Technician uses his meter to Go On the Job with the CSG Technet system from their home.

Web Browser

https://tndev.csgsystems.com/qaport/tn/technet.html?id=29&mainVal=3&

Select Job

174922 [AS : 8-10 : NC] ▼

Registration Code: EYK

Schd: 03/16/2006

TS: 8-10

Done.

<< SCROLL SCROLL >> << CHAR CHAR >>

Web Browser

https://tndev.csgsystems.com/qaport/tn/technet.html?id=24&historicalW/c

Job Menu (174922)

Go On Job ▼ OK

Enter ETA

Enter ETA: OK

Back

Done.

<< SCROLL SCROLL >> << CHAR CHAR >>

Web Browser

https://tndev.csgsystems.com/qaport/tn/technet.html?id=90&Opt=2&WoL

Acknowledgement Required

238994:RC:12-2:1 238884:HP:8-10:1

OK Back

sGET Connecting to 206.144.146.207

<< SCROLL SCROLL >> << CHAR CHAR >>

Web Browser

https://tndev.csgsystems.com/qaport/tn/technet.html?id=24&historicalW/c

Job Menu (174922)

Chg Disp Status ▼ OK

Enter ETA

Enter ETA: OK

Back

Done.

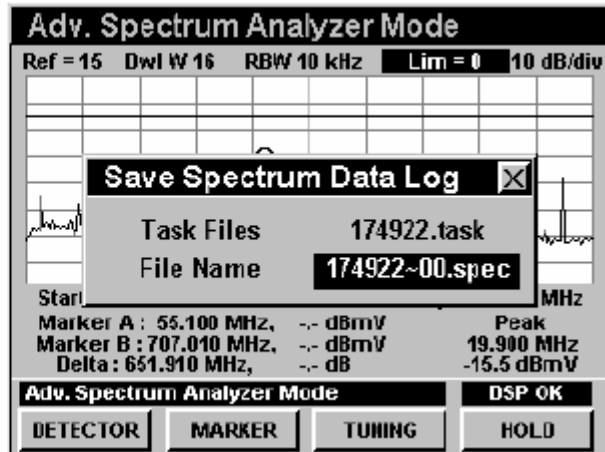
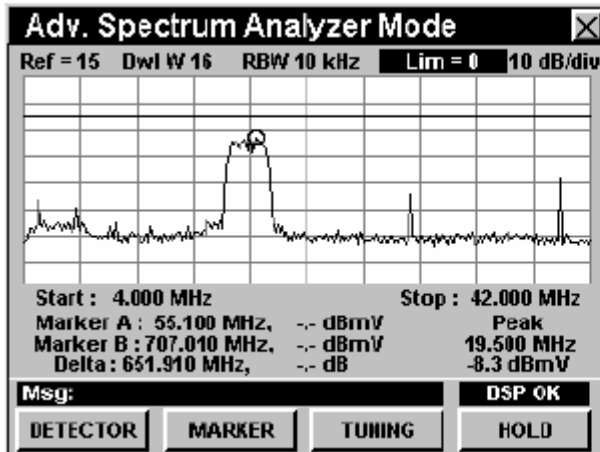
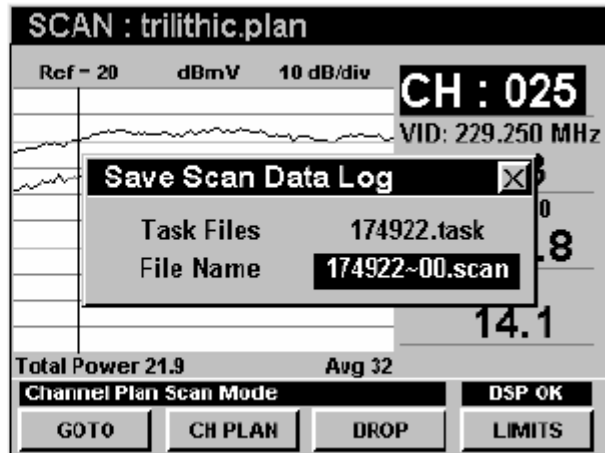
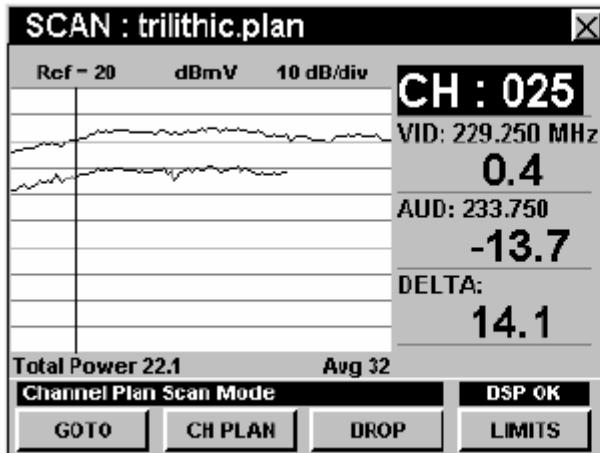
<< SCROLL SCROLL >> << CHAR CHAR >>

For Additional Help Contact
 Trilithic Applications Engineering
 1-800-344-2412 or 317-895-3600
support@trilithic.com or
www.trilithic.com

860 DSPi Work Orders
 P/N 0010275012 – Rev 5/07
 4 of 10

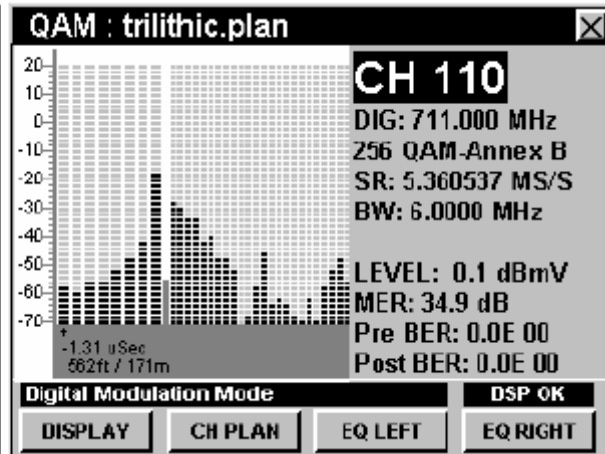
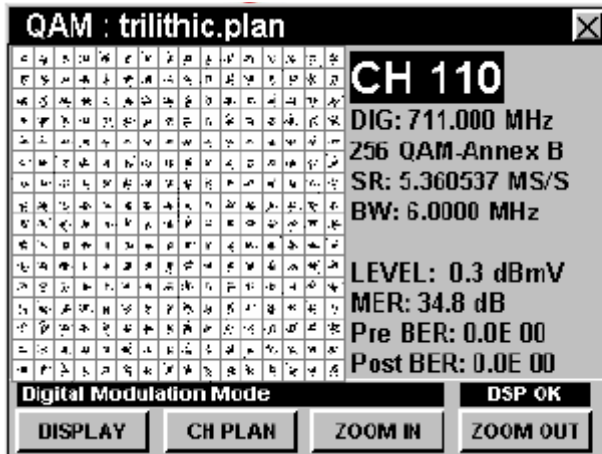
8:30 AM

Technician starts taking data at the job site. Each time a macro or data log is taken, the data is automatically linked to the Job.



For Additional Help Contact
 Trilithic Applications Engineering
 1-800-344-2412 or 317-895-3600
support@trilithic.com or
www.trilithic.com

860 DSPi Work Orders
 P/N 0010275012 – Rev 5/07
 5 of 10



For Additional Help Contact
 Trilithic Applications Engineering
 1-800-344-2412 or 317-895-3600
support@trilithic.com or
www.trilithic.com

860 DSPi Work Orders
 P/N 0010275012 – Rev 5/07
 6 of 10



QAM : trilithic.plan [X]

CH 110
 DIG: 711.000 MHz
 256 QAM-Annex B
 SR: 5.360537 MS/S
 BW: 6.0000 MHz

LEVEL: 0.3 dBmV
 MER: 34.7 dB
 Pre BER:<1.0E-09
 Post BER:<1.0E-09

Errors
 100000
 10000
 1000
 100
 10
 0

140 120 100 80 60 40 20 0
 Seconds

Digital Modulation Mode **DSP OK**

DISPLAY CH PLAN

QAM : trilithic.plan [X]

CH 110
 DIG: 711.000 MHz
 256 QAM Annex B

Save QAM Data Log [X]

Task Files 174922.task
 File Name 174922~00.qam

Pre BER:<1.0E-09
 Post BER:<1.0E-09

Digital Modulation Mode **DSP OK**

DISPLAY CH PLAN ZOOM IN ZOOM OUT

AUTOTEST MACROS [X]

16-Mar-2006 11:40:16

FILE NAME	LOG SIZE	SCHEDULE
all_test.mac	37452 bytes	IMMEDIATE
---	---	---
---	---	---
---	---	---
---	---	---
---	---	---
---	---	---
---	---	---

Automatic Test Mode

COPY EDIT START DELETE

AUTOTEST RESULTS [X]

16-Mar-2006 11:40:40

Step #1 : Executing	Step #9
Step #2	Step #10
Step #3	Step #11
Step #4	Step #12
Step #5	Step #13
Step #6	Step #14
Step #7	Step #15
Step #8	Step #16

Collecting Data **93 chs**

LOAD

AUTOTEST RESULTS [X]

16-Mar-2006 11:43:57

Step #1 : SCAN,PASS	Step #9
Step #2 : TILT,FAIL	Step #10
Step #3 : HUM,PASS	Step #11
Step #4 : Executing	Step #12
Step #5	Step #13
Step #6	Step #14
Step #7	Step #15
Step #8	Step #16

Collecting Data (Waiting for Lock) **Ch 14**

LOAD

AUTOTEST RESULTS [X]

16-Mar-2006 12:01:20

Step #1 : SCAN,PASS	Step #9 : -----
Step #2 : TILT,FAIL	Step #10 : -----
Step	FAIL - Save Data As [X]
Step	Task Files 174922.task
Step	File Name 174922~00.log
Step #7 : -----	Step #15 : -----
Step #8 : -----	Step #16 : -----

Executing Test Step **DSP OK**

LOAD

For Additional Help Contact
 Trilithic Applications Engineering
 1-800-344-2412 or 317-895-3600
support@trilithic.com or
www.trilithic.com

9:00 AM

Technician logs back into CSG and closes out the present Job and then Opens the next job.

Web Browser

https://tndev.csqsystems.com/qaport/tn/technet.html?Id=5180pt=28&Inde

Job Menu (174922)

Chg Disp Status [v] [OK]

Enter ETA

Enter ETA: [] [OK]

[Back]

Done.

<< SCROLL SCROLL >> << CHAR CHAR >>

Web Browser

https://tndev.csqsystems.com/qaport/tn/technet.html?Id=5180pt=108&Ind

Select Dispatcher Status

COMPLETE [v]

Resolution Codes

ND Res: [v]

CN Res: [v]

Res Code1: []

Res Code2: []

Loading...

<< SCROLL SCROLL >> << CHAR CHAR >>

Web Browser

https://tndev.csqsystems.com/qaport/tn/technet.html?Id=5180pt=108&Ind

RESOLUTION CODES

ND Res: CH:CREDIT HOLD [v]

CN Res: [v]

Res Code1: 001

Res Code2: []

Res Code3: []

Res Code4: []

Done.

<< SCROLL SCROLL >> << CHAR CHAR >>

Web Browser

https://tndev.csqsystems.com/qaport/tn/technet.html?Id=63&wo Status=va

Res Code1: []

Res Code2: []

Res Code3: []

Res Code4: []

Res Code5: []

Res Code6: []

[OK] Back

sOET Connecting to 206.144.146.207

<< SCROLL SCROLL >> << CHAR CHAR >>

Task Manager

16-Mar-2006 Charge 14.20V IP 12:30:52

TASK NAME	STATUS	<< DATA #1 >>
174922.clsd	closed	.Job ID
		174922

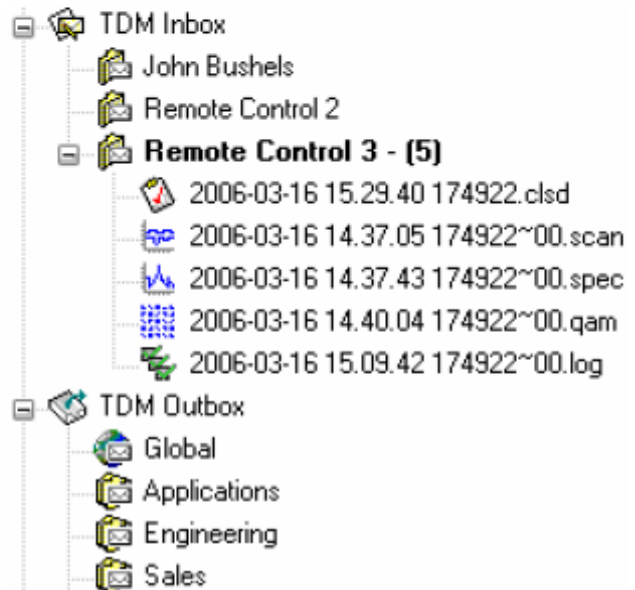
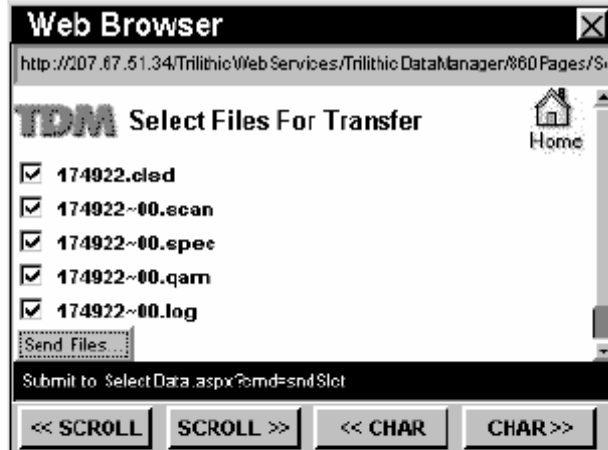
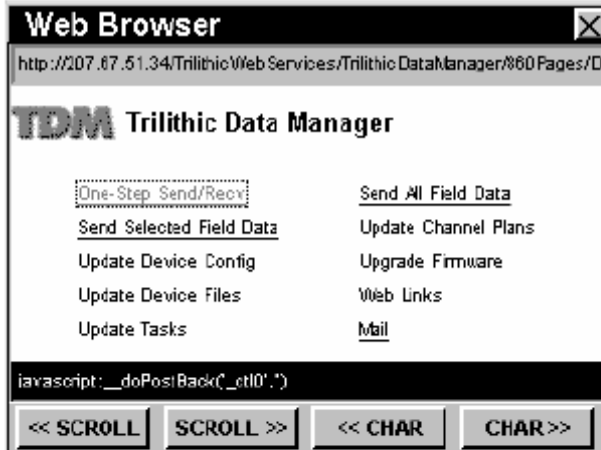
Task Manager

For Additional Help Contact
 Trilithic Applications Engineering
 1-800-344-2412 or 317-895-3600
support@trilithic.com or
www.trilithic.com

860 DSPi Work Orders
 P/N 0010275012 – Rev 5/07
 8 of 10

5:00 PM

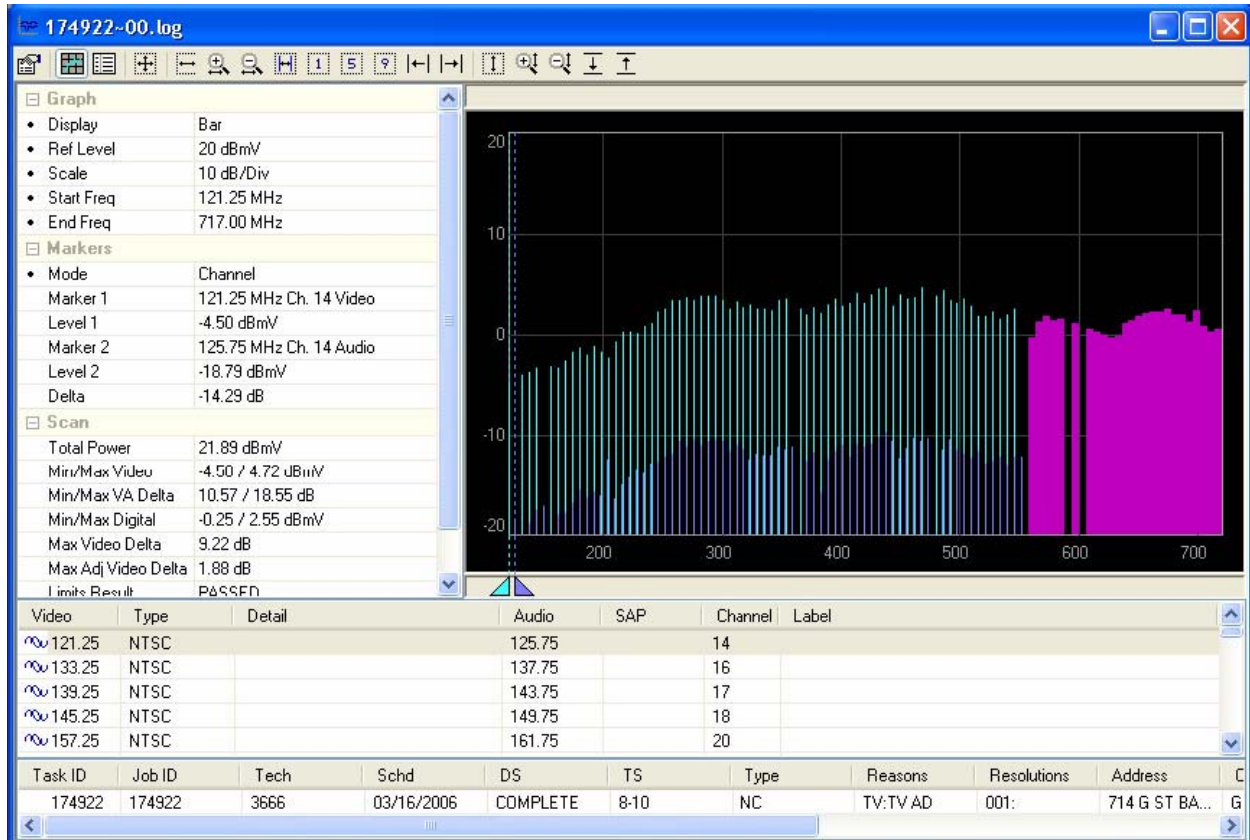
Technician logs back into TDM and uploads the days work.



For Additional Help Contact
 Trilithic Applications Engineering
 1-800-344-2412 or 317-895-3600
support@trilithic.com or
www.trilithic.com

860 DSPi Work Orders
 P/N 0010275012 – Rev 5/07
 9 of 10

Once the data has been imported into Workbench, all sorts and queries are available by technician, data type, any custom Task header, ect. Here is an example of a data log that was imported from the above test.



For Additional Help Contact
 Trilithic Applications Engineering
 1-800-344-2412 or 317-895-3600
support@trilithic.com or
www.trilithic.com

860 DSPi Work Orders
 P/N 0010275012 – Rev 5/07
 10 of 10